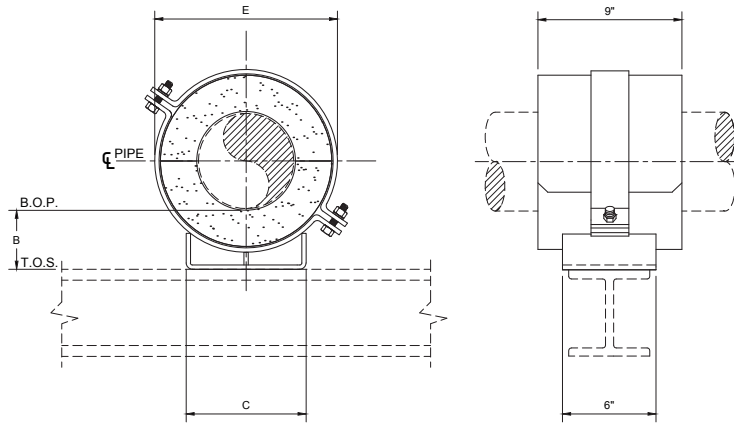
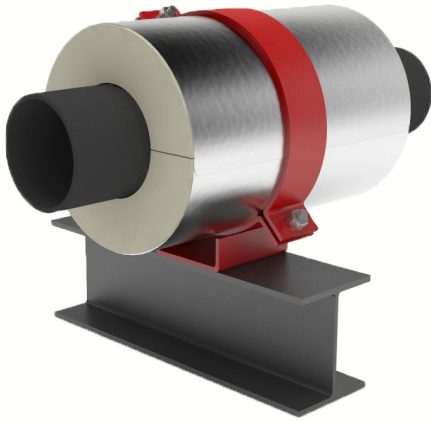


Model C3100 Insulated Friction Pipe Anchor



Contact factory for other dimensional, temperature, load, or axial travel requirements. Available in all insulation thickness.

The load ratings represent average values obtained in accordance with accepted test methods and are subject to normal manufacturing variations.

Dimensions and ratings are subject to change without notice.

Note: For higher load ratings, see: C3200, C4100.

| Pipe Size | Load Rating | | | Insul. Thk. = 1" | | | Insul. Thk. = 1-1/2" | | | Insul. Thk. = 2" | | | Insul. Thk. = 2-1/2" | | | Insul. Thk. = 3" | | | Insul. Thk. = 4" | | | Insul. Thk. = 5" | | |
|-----------|-------------|----------|-----------|------------------|------|--------|----------------------|------|--------|------------------|------|--------|----------------------|------|--------|------------------|------|--------|------------------|------|--------|------------------|------|--------|
| | Vert. Lbs | Lat. Lbs | Axial Lbs | B | C | E | B | C | E | B | C | E | B | C | E | B | C | E | B | C | E | B | C | E |
| 1/2 | 280 | 140 | 56 | 4 | 1.5 | 3.25 | 4 | 2 | 4.375 | 4 | 2.5 | 5.375 | 4 | 4 | 7 | 6 | 4.5 | 8 | 6 | 6.5 | 10 | 8 | 8 | 12.125 |
| 3/4 | 350 | 175 | 70 | 4 | 1.5 | 3.25 | 4 | 2 | 4.375 | 4 | 2.5 | 5.375 | 4 | 4 | 7 | 6 | 4.5 | 8 | 6 | 6.5 | 10 | 8 | 8 | 12.25 |
| 1 | 450 | 225 | 90 | 4 | 2 | 3.875 | 4 | 2.5 | 5 | 4 | 3 | 6.062 | 4 | 4 | 7 | 6 | 4.5 | 8 | 6 | 6.5 | 10 | 8 | 8 | 12.25 |
| 1 1/2 | 650 | 325 | 130 | 4 | 2 | 4.5 | 4 | 2.5 | 5.5 | 4 | 4 | 7.125 | 4 | 4.5 | 8.125 | 6 | 5.5 | 9.125 | 6 | 7.5 | 11.25 | 8 | 9 | 13.25 |
| 2 | 750 | 375 | 150 | 4 | 2.5 | 5 | 4 | 3 | 6.0625 | 4 | 4 | 7.125 | 4 | 4.5 | 8.125 | 6 | 5.5 | 9.125 | 6 | 7.5 | 11.25 | 8 | 9 | 13.25 |
| 2 1/2 | 920 | 460 | 184 | 4 | 2.5 | 5.5 | 4 | 4 | 7.125 | 4 | 4.5 | 8.125 | 4 | 5.5 | 9.125 | 6 | 6.5 | 10.125 | 6 | 8 | 12.25 | 8 | 9.5 | 14.5 |
| 3 | 1060 | 530 | 212 | 4 | 3 | 6.187 | 4 | 4 | 7.125 | 4 | 4.5 | 8.125 | 4 | 5.5 | 9.125 | 6 | 6.5 | 10.125 | 6 | 8 | 12.375 | 8 | 9.5 | 14.625 |
| 4 | 1680 | 840 | 336 | 4 | 4 | 7.25 | 4 | 4.5 | 8.25 | 4 | 5.5 | 9.25 | 4 | 6.5 | 10.25 | 6 | 7.5 | 11.375 | 6 | 9 | 13.375 | 8 | 10.5 | 15.625 |
| 5 | 2100 | 1050 | 420 | 4 | 4.5 | 8.5 | 4 | 5.5 | 9.5 | 4 | 6.5 | 10.5 | 4 | 7.5 | 11.625 | 6 | 8 | 12.625 | 6 | 9.5 | 14.875 | 8 | 11 | 16.875 |
| 6 | 2550 | 1275 | 510 | 4 | 5.5 | 9.5 | 4 | 6.5 | 10.5 | 4 | 7.5 | 11.625 | 4 | 8 | 12.625 | 6 | 9 | 13.625 | 6 | 10.5 | 15.875 | 8 | 12 | 17.875 |
| 8 | 3400 | 1700 | 680 | 4 | 7.5 | 11.625 | 4 | 8 | 12.625 | 4 | 9 | 13.625 | 6 | 9.5 | 14.875 | 6 | 10.5 | 15.875 | 6 | 12 | 18.125 | 8 | 13 | 20.125 |
| 10 | 4000 | 2000 | 800 | 4 | 9 | 13.875 | 4 | 9.5 | 15.125 | 4 | 10.5 | 16.125 | 6 | 11 | 17.125 | 6 | 12 | 18.125 | 6 | 13 | 20.125 | 8 | 14.5 | 22.125 |
| 12 | 4400 | 2200 | 880 | 4 | 10.5 | 16.125 | 4 | 11 | 17.125 | 4 | 12 | 18.125 | 6 | 12.5 | 19.125 | 6 | 13 | 20.125 | 6 | 14.5 | 22.125 | 8 | 16 | 24.125 |
| 14 | 5000 | 2500 | 1000 | 4 | 11 | 17.125 | 4 | 12 | 18.125 | 4 | 12.5 | 19.125 | 6 | 13 | 20.125 | 6 | 14 | 21.125 | 6 | 15.5 | 23.125 | 8 | 16.5 | 25.125 |
| 16 | 5800 | 2900 | 1160 | 4 | 12.5 | 19.375 | 4 | 13 | 20.375 | 6 | 14 | 21.375 | 6 | 14.5 | 22.375 | 6 | 15.5 | 23.375 | 8 | 16.5 | 25.375 | 8 | 18 | 27.375 |
| 18 | 6400 | 3200 | 1280 | 4 | 14 | 21.375 | 4 | 14.5 | 22.375 | 6 | 15.5 | 23.375 | 6 | 16 | 24.375 | 6 | 16.5 | 25.375 | 8 | 18 | 27.375 | 8 | 19.5 | 29.375 |
| 20 | 6800 | 3400 | 1360 | 4 | 15.5 | 23.375 | 4 | 16 | 24.375 | 6 | 16.5 | 25.375 | 6 | 17.5 | 26.375 | 6 | 18 | 27.375 | 8 | 19.5 | 29.375 | 8 | 21 | 31.375 |
| 24 | 7200 | 3600 | 1440 | 4 | 18 | 27.375 | 4 | 19 | 28.375 | 6 | 19.5 | 29.375 | 6 | 20.5 | 30.375 | 6 | 21 | 31.375 | 8 | 22.5 | 33.375 | 8 | 24 | 35.375 |
| 30 | 9400 | 4700 | 1880 | 4 | 22.5 | 33.625 | 6 | 23 | 34.625 | 6 | 24 | 35.625 | 6 | 24.5 | 36.625 | 6 | 25 | 37.625 | 8 | 26.5 | 39.625 | 8 | 28 | 41.625 |
| 36 | 11000 | 5500 | 2200 | 4 | 26.5 | 40.125 | 6 | 27.5 | 41.125 | 6 | 28 | 42.125 | 6 | 28.5 | 43.125 | 6 | 29.5 | 44.125 | 8 | 31 | 46.125 | 8 | 32.5 | 48.125 |
| 42 | 12400 | 6200 | 2480 | 4 | 31 | 46.125 | 6 | 31.5 | 47.125 | 6 | 32.5 | 48.125 | 6 | 33 | 49.125 | 6 | 33.5 | 50.125 | 8 | 35 | 52.125 | 8 | 36.5 | 54.125 |

Application:

Model C3100 is designed for use on:

- Hot water
- Cold water
- Chilled water
- Dual temperature
- Where thermal cycle are infrequent
- Where axial forces are relatively light or in balance
- Steam
- Air
- Gas
- Vacuum

Intended for installation on:

- Flat surfaces

Temperature Range:

Standard: +40°F to +1200°F CalSil Insulation

Note: Up to 1800°F available upon request.

Cryogenic: -275°F to +275°F Urethane Insulation.

Add U after the model number (i.e., C3100U)

Features:

- All pipe sizes
- Easy installation
- Eliminates welding to pipe
- Overlapping galvanized sheet metal jacket
- Insulating structural inserts for load transfer
- Other I.D.'s and/or O.D.'s available on request
- Bottom-of-pipe to top-of-shield matches insulated supports in "B" series

Performance test results on file:

Available upon request.

Material Data:

- **C3100:** Applicable PSI spec. doc.: No. 209.
- **Insulation:** Calcium silicate asbestos-free, treated with water repellent.
- **Jackets:** Galvanized steel ASTM A-653.
- **Glue:** Industrial contact adhesive
- **Structural Inserts:** High-density calcium silicate asbestos-free, treated with water repellent.
- **Steel Straps/Base:** Carbon steel ASTM A-36.
- **Fasteners:** ASTM A-307 plated.
- **Coating:** Primer coated or hot dipped galvanized. Other coatings available upon request.

Formal submittal sheets available